

PGL

2027

Osmington Bay

Day 1

- Set off from school around 9:30am
- Stop at a service station about half way (for the toilet)
- Arrive at PGL Osmington Bay at around 12/1pm and eat our packed lunch
- Meet with our groupies and have a tour of the site
- 2 afternoon activities
- Dinner
- Evening activity
- Bed!



Accommodation



...ZZZZ



...ZZZZ



Food

- 3 delicious meals every day
- Lots of different choices
- Dietary requirements/allergies all catered for
- Picky eaters- always have something to eat

Hot Options

Pork Sausage **GF**

1 Childs Serving, 1 Sausage ⓘ

1 Adult Serving, 2 Sausages ⓘ

100g ⓘ

Vegetable Sausage **V VE GF**

1 Childs Serving, 1 Sausage ⓘ

1 Adult Serving, 2 Sausages ⓘ

100g ⓘ

Baked Beans **V VE GF**

1 Childs Serving ⓘ

1 Adult Serving ⓘ

100g ⓘ

Hash Brown **V VE GF**

1 Childs Serving, 1 Hash Brown ⓘ

1 Adult Serving, 2 Hash Browns ⓘ

100g ⓘ

Fresh Mushrooms **V VE GF**

1 Childs Serving ⓘ

1 Adult Serving ⓘ

100g ⓘ

Toast with Sunflower Spread & Jam **Gluten Free Alternative Available V VE**

2 Slices ⓘ

100g ⓘ

Main Course Options

Fish Fingers **Gluten Free Alternative Available**

Omega 3 breaded MSC cod fish finger

1 Childs Serving, 4 Fish Fingers ⓘ

1 Adult Serving, 6 Fish Fingers ⓘ

100g ⓘ

Vegetable Chow Mein **V VE**

Stir fried vegetables cooked in soy sauce served with noodles

1 Childs Serving ⓘ

1 Adult Serving ⓘ

100g ⓘ

Chicken in a Tomato & Pepper Sauce Topped with Cheese **GF**

Chicken breast fillets topped with tomato sauce, peppers and cheese

1 Childs Serving, 3 Chicken Fillets ⓘ

1 Adult Serving, 4 Chicken Fillets ⓘ

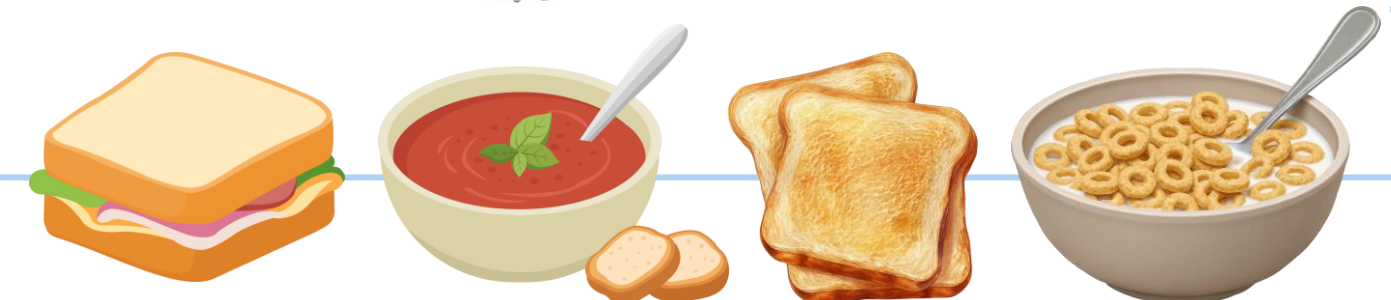
100g ⓘ

Penne Pasta with Tomato Sauce & Grated Cheese **Gluten Free Alternative Available V**

1 Childs Serving ⓘ

1 Adult Serving ⓘ

100g ⓘ



Timetable



7:00am–Time to wake up

BREAKFAST

9–10:30– Activity 1

10:40–12:10– Activity 2

LUNCH

14:15–15.45– Activity 3

15.55–17.25– Activity 4

DINNER

19:30–20:30– Evening game

21:15– Lights out



Activities



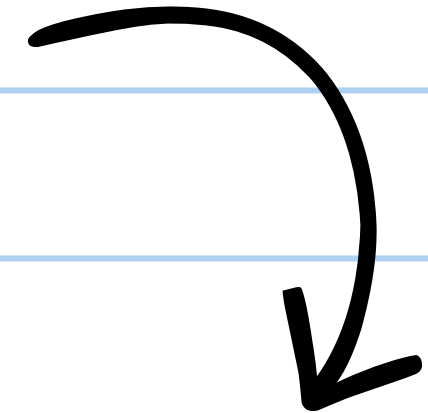
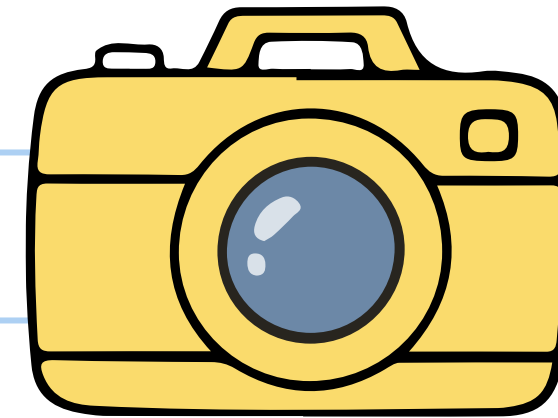
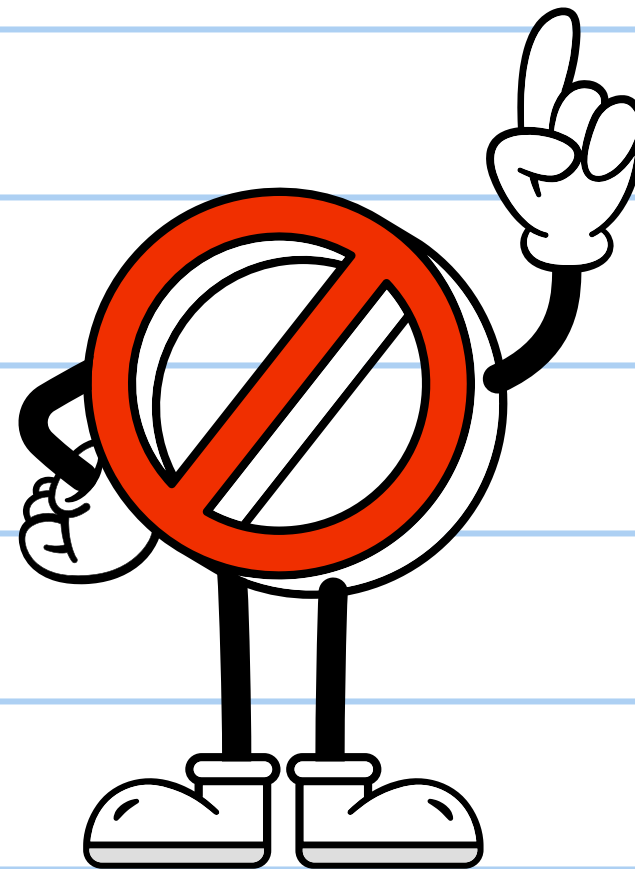
Medication

- 2 adults will administer boys medication and 2 other adults will administer girls medication
- Medication forms must be completed and returned to Mrs Shadbolt before the trip
- All staff from New Haw and PGL are first aid trained



What not to bring:

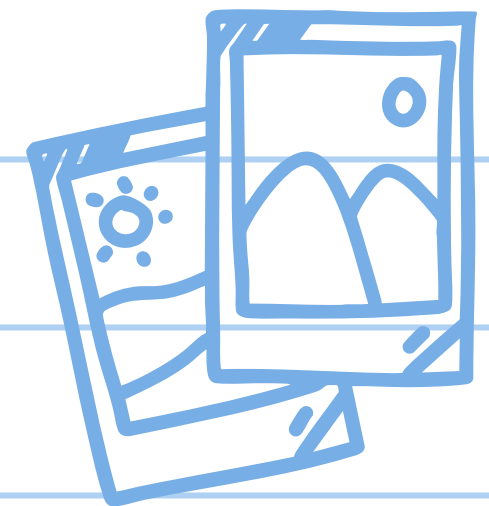
Mobile phones
Hair straighteners
Any other electronics
(iPad, iPod etc.)
Hair gel
Make up
Aerosols



If they want to bring an inexpensive camera, they are responsible for this. A disposable camera would be perfect!

Photographs

- Children are encouraged to bring their own (inexpensive) camera - disposable or digital
- Staff will take photos whilst on PGL
- All photos that include images of pupils will be shared in the Leavers' assembly (with photo permission)



Any questions?